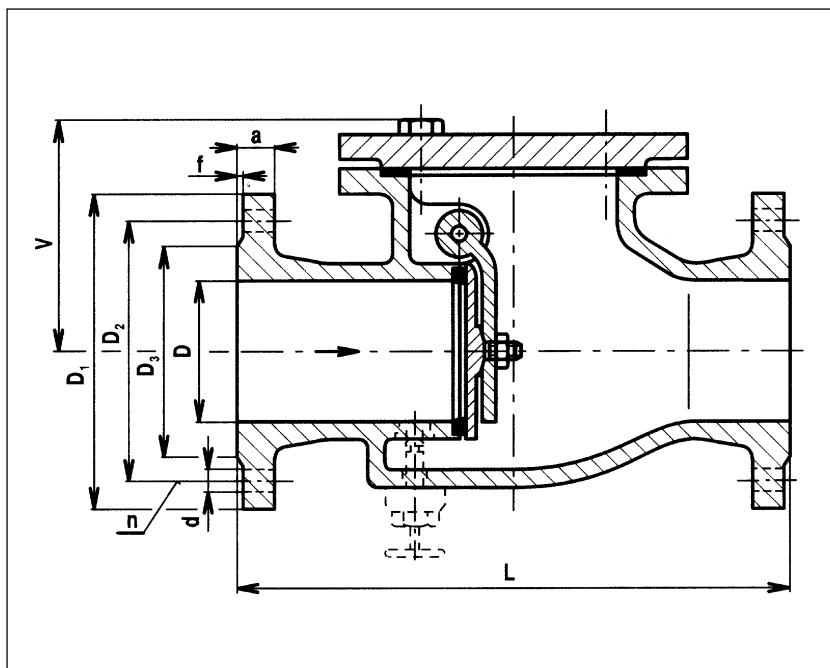


# SWING-CHECK VALVE

**L 10 117 016**

**PN 16**



## APPLICATION

Self-acting valve which prevents reverse flow of the service fluid. It is used for aggressive liquids, steam, gases considering type, temperature and concentration. Maximum working pressures :

Temperature [°C]	Pressure [MPa]
80	1,60
300	1,30
400	1,00

The valve is not for flow closure - a shut-off valve must be installed in the pipeline for this purpose.

## DESIGN FEATURES

Swing check valve is straight flow valve. Disc fits on the seat sealing surface and is carried in an arm revolving on a special hinge pin. Disc is pushed to the sealing surfaces during the reverse flow.

## STANDARDS

Face-to-face dimensions are given in the table below. Face-to-face dimensions as per ČSN EN 558-1. Flange connection dimensions as per ČSN 13 1060 and ČSN 13 1061.

## TESTING AND CERTIFICATES

Testing is carried out in accordance with DIN 3230, certificates to EN 10204/3.1.B.

## MATERIAL

Part	Material
Body, bonnet, disc	stainless steel (1.4410)
Pin	stainless steel (13Cr)
Sealing surfaces	basic material

## INSTALLATION

Valve can be installed either into horizontal or vertical position. In vertical pipeline disc must be in upper position and flow direction must be upwards.

## VARIOUS DESIGN

L10 - basic, L11 - with lever and counterweight, L16 - with by-pass, L17 - with lever and counterweight and by-pass

DN	L	V	D1	D2	D3	a	f	d	n	kg
40	200	105	150	110	88	18	3	18	4	12
50	230	110	165	125	102	18	3	18	4	15
65	290	140	185	145	122	18	3	18	4	20
80	310	145	200	160	133	20	3	18	8	24
100	350	160	220	180	158	20	3	18	8	35
125	400	180	250	210	184	22	3	18	8	48
150	460	195	285	240	212	22	3	22	8	62
200	500	245	340	295	268	24	3	22	12	103